

Gamesman Conversion Manual for GM205AC08##



This document is the private unpublished property of Money Controls Ltd and may not be reproduced in part or in total by any means, electronic or otherwise, without the written permission of Money Controls Ltd. Money Controls Ltd does not accept liability for any errors or omissions contained within this document. Money Controls Ltd shall not incur any penalties arising out of the adherence to, interpretation of, or reliance on, this standard. Money Controls Ltd will provide full support for this product when used as described within this document. Use in applications not covered or outside the scope of this document may not be supported. Money Controls Ltd. reserves the right to amend, improve or change the product referred to within this document or the document itself at any time.

Contents

1. Diary of changes	3
2. Introduction	3
3. Equipment.....	5
4. Conversion – Strip down	6
5. Bridge Plate Assembly	7
6. Conversion – Re-build	9
7. Setting the “Dog Point”	10
8. Exploded Drawings	11

Figures

Figure 1: Exploded Drawing – Bridge plate assembly.....	8
Figure 2: Exploded Drawing – Bowl and disk assembly	11
Figure 3: Exploded Drawing – Motor, frame and base assembly	12

Tables

Table 1: Exploded diagram parts and description.....	13
Table 2: Build No 1 Conversion parts list	14
Table 3: Build No 2 Conversion parts list	15
Table 4: Build No 3 Conversion parts list	16
Table 5: Build No 4 Conversion parts list	17
Table 6: Build No 5 Conversion parts list	18
Table 7: Build No 6 Conversion parts list	19
Table 8: Build No 7 Conversion parts list	20
Table 9: Build No 8 Conversion parts list	21
Table 10: Build No 9 Conversion parts list	22

1. Diary of changes

Issue 1.0 - First issue.....	9 th Feb 2001
Issue 2.0	12 th Feb 2001
➤ Changes requested by Coin Inc	
➤ Add spanner / wrench	
➤ Changed c/sk to countersunk.	
➤ Changed dog point info.	
➤ Updated Table 1.	
Issue 3.0	24 th May 2001
➤ Update to Table 1.	
➤ Update to Table 2.	
➤ Fig 1a and 1b updated to include labels.	
Issue 4.0	9 th Aug 2001
➤ Updated Table 1.	
➤ Updated Table 2.	
➤ Amended last page disclaimer.	
➤ Fig 1a updated to include bridge plate details.	
Issue 5.0	24 th Oct 2001
➤ Updated Table 2.	
Issue 6.0	7 th Nov 2001
➤ Reformatted to TSP028.	
➤ Added Bridge Plate Instructions.	
➤ Fig 1 added.	
➤ Fig 1a changed to Fig 2.	
➤ Fig 1b changed to Fig 3.	
➤ Spelling mistakes corrected.	
Issue 7.0	9 th Nov 2001
➤ Contents page corrected	
Issue 8.0	9 th Jan 2002
➤ Tables 2 to 10 updated.	
➤ Fig 2 Exploded drawing copied from TSP008.	
➤ Fig 3 Exploded drawing copied from TSP008.	
➤ Money Controls logo added.	
Issue 8.1	5 th March 2002
➤ Applied TMWP v3.0	
➤ Re-numbered section 5.	
Issue 8.2	21 st March 2002
➤ Added figure references to strip down and re-build sections.	
Issue 8.5	23 rd March 2002
➤ Amended section 5 "Bridge Plate Assembly".	
Issue 9.0	14 th April 2002
➤ Amended Figure 2 (Bridge Plate numbering).	
➤ Amended Table 2 to Table 10 (highlighted Bridge Plate assembly).	
Issue 9.1.....	3 rd Sept 2002
➤ Modification to disclaimer	

2. Introduction

This manual has been compiled to enable Games Manufacturers, Casinos and Service Centres to convert a Money Controls Gamesman Hopper from one denomination to another.

A reference chart has been compiled and can be found at the back of this manual, see [Table 2](#) to [Table 10](#).

The conversion kit will be packed individually. In each package will be found a checklist of parts that are in the kit. The kit should be checked against the checklist before starting a hopper conversion.

3. Equipment

The following equipment will be required:-

- 1) Torque driver set at 4.0Nm [2.95 ft-lbs.] and fitted with a No3 Pozi head screw bit.
- 2) Torque driver set at 4.0Nm [2.95 ft-lbs.] and fitted with a No2 Pozi head screw bit.
- 3) Torque driver set at 4.0Nm [2.95 ft-lbs.] and fitted with a 10mm A/F "Across Flats" socket.
- 4) 3mm Allen Key.
- 5) 4mm Allen Key.
- 6) 10mm A/F "Across Flats" open-end spanner / wrench.

Note:- Tools not supplied by Money Controls.

4. Conversion – Strip down

Refer to [Figure 2](#) and [Figure 3](#) Exploded Diagram Pages [11](#) and [12](#).

- 1) Disconnect the opto loom [Item 30 - [Figure 2](#)] from the control board.
- 2) Disconnect the motor loom [Item 31 - [Figure 3](#)].
- 3) Disconnect the level sense wires from the bowl [Item 32 - [Figure 3](#)].
- 4) Using the 4mm Allen Key, remove the two top M6 x 25 shoulder screws, [Item 2 - [Figure 2](#)] and coloured spacers, [Item 3 - [Figure 2](#)]. The bowl can then be lifted off the bottom two M6 x 25 shoulder screws.
- 5) Remove the bottom right hand M6 x 25 shoulder screw, [Item 2 - [Figure 2](#)] and coloured spacer/s, [Item 3 - [Figure 2](#)].
- 6) Remove the M6 x 20 Poz Pan head screw, [Item 5 - [Figure 2](#)]. Remove the M6 x 30 poz pan head screw, nut and shake-proof washer, [Items 7 - [Figure 2](#) and 26 & 27 - [Figure 3](#)]. The bridge plate unit, [Item 4 - [Figure 2](#)], can now be removed.
- 7) Take hold of the motor to keep it in position. Then remove the two M6 x 16 poz countersunk Anu-lok screws, [Item 12 - [Figure 2](#)], from the centre of the disc unit, [Item 11 - [Figure 2](#)]. With the two screws removed the drive assembly, spring, rotary bearing and disc unit can be removed, [Items 11 - [Figure 2](#) and 22, 23 & 24 - [Figure 3](#)].
- 8) Remove the M6 x 20 poz countersunk screw, nut and shake-proof washer, [Items 18, 19 & 20 - [Figure 2](#)], then remove the wiper spacer, [Item 17 - [Figure 2](#)].
- 9) ^(See note 1) Remove the two M6 x 30 poz pan screws, nuts and shake-proof washers, [Items 25- [Figure 2](#) and 26 & 27 - [Figure 3](#)], holding the hopper housing to the frame unit. Remove the housing, [Item 21 - [Figure 2](#)], from the frame unit, [Item 28 - [Figure 3](#)].
- 10) ^(See note 1) Remove the three M4 poz pan screws, 4mm plain washer and the 4mm – shake-proof washer, [Items 14, 15 & 16 - [Figure 2](#)], holding the horseshoe, [Item 13 - [Figure 2](#)], to the housing, [Item 21 - [Figure 2](#)].

Note 1:- Steps 9 and 10 are only carried out when either converting a hopper TO a build No 6, No 7 or No 8 or FROM a build No 6, No 7 or No 8.

Hopper build No 8 is not fitted with a Horseshoe.

Step 9 is omitted if conversion is being carried out on a DC Hopper.

5. Bridge Plate Assembly

Please refer to [Figure 1](#).

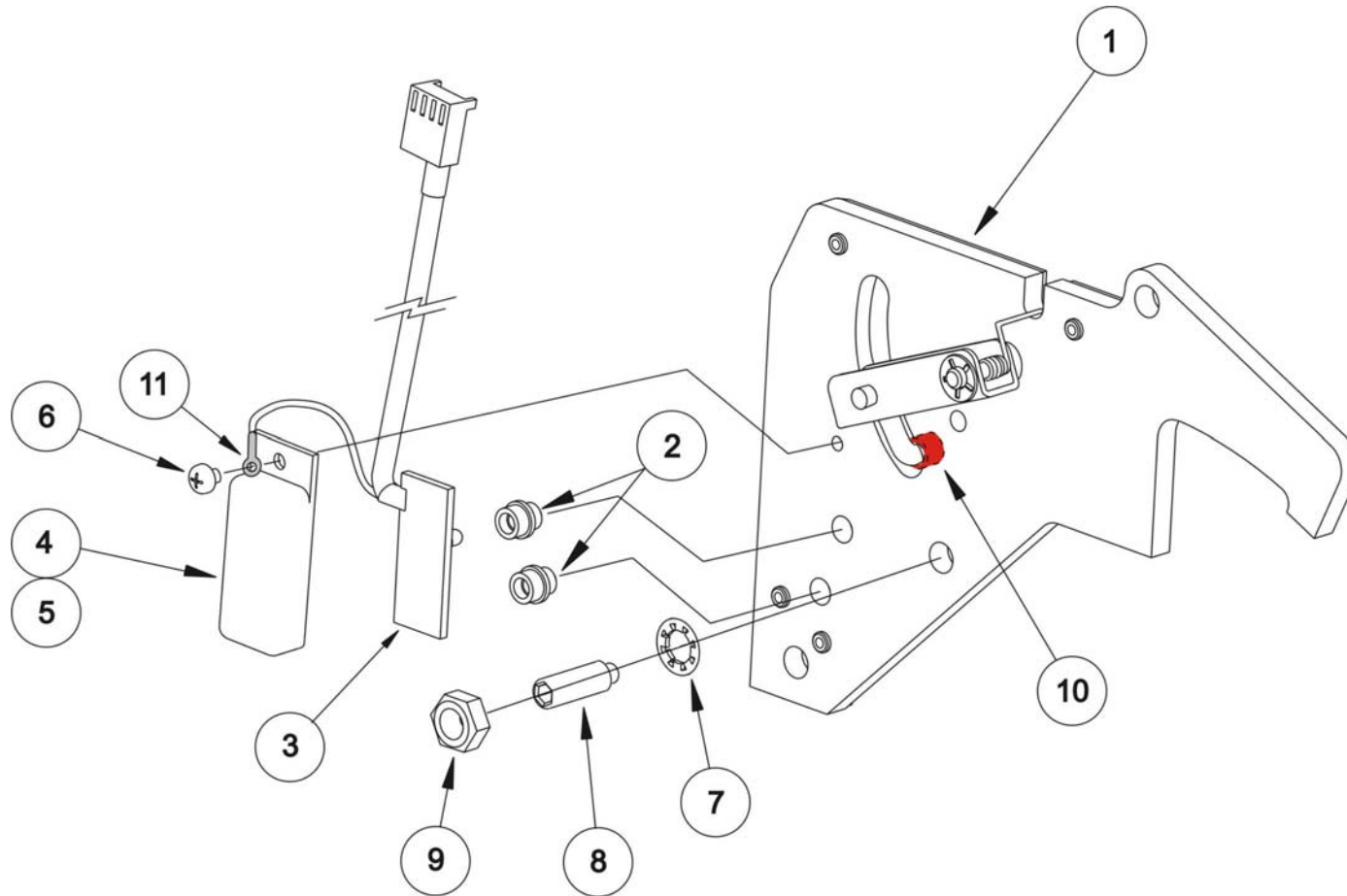
- 1) Fit the two opto shields [Item 2] into the two holes (as shown) in the Bridge Plate Assembly. [Item 1]
- 2) Place the opto's on the opto PCB Assembly [Item 3] into the two opto shields [Item 2] in the Bridge Plate Assembly.
Fix the self-adhesive pad [Item 5] to the inside of the PCB Cover [Item 4].
Place the PCB Cover [Item 4] over the opto PCB Assembly [Item 3].
Place the M3 x 5 Taptite screw [Item 6] through the ring terminal from the opto PCB [Item 11], through the PCB cover [Item 4] and screw into the Bridge Plate Assembly [Item 1].
- 3) Screw the M6 x 16 Dog Point [Item 8] into the Bridge Plate Assembly [Item 1].
Place the 6mm Shake-proof washer [Item 7] onto the M6 x 16 Dog Point [Item 8] then screw the M6 Nut [Item 9] onto the M6 x 16 Dog Point [Item 8].

See Section [7 Setting the "Dog Point"](#) for further information.

Note:- The Dog Point should be set after the Bridge Plate Unit has been fixed to the hopper.

- 4) Place the Arm Roller [Item 10] onto the end of the spindle on Arm Unit before fixing the Bridge Plate unit to a hopper.

Figure 1: Exploded Drawing – Bridge plate assembly



CONFIDENTIAL

Not to be disclosed without prior written permission from Money Controls

Page 8 of 23

6. Conversion – Re-build

- 1) Place horseshoe, [Item 13 - [Figure 2](#)], in the housing, [Item 21 - [Figure 2](#)] and line up the holes in the housing with the 3 x M4 tapped holes in the horseshoe. Fix the horseshoe in place with the M4 screw, 4mm plain washer and the 4mm shake-proof washer, [Items 14, 15 & 16 - [Figure 2](#)]
- 2) Take the wiper spacer, [Item 17 - [Figure 2](#)], from the kit and with the M6 x 20 poz countersunk screw [Item 18, 19 & 20 - [Figure 2](#)] fit the wiper to the housing, [Item 21 - [Figure 2](#)]. At this stage leave the screw only hand tight so the bridge plate, [Item 4 - [Figure 2](#)], can be easily fitted.
- 3) Take the rotary bearing, spring and drive assembly previously removed, [Items 22, 23 & 24 - [Figure 3](#)] and locate the pin on the rotary bearing into the small hole in the housing. With the spring mounted on to the drive bush, locate the drive assembly into the rotary bearing.
- 4) Holding the drive assembly in place, place the disc unit, [Item 11 - [Figure 2](#)], from the kit onto the locating pip on the end of the drive bush. Using the two M6 x 16 poz countersunk Anu-lok screws, [Item 12 - [Figure 2](#)], from the kit, fix the disc to the drive bush.
- 5) Fit the housing unit, [Item 21 - [Figure 2](#)], to the frame unit, [Item 28 - [Figure 3](#)], with the 2 x M30 poz pan head screws, nuts and shake-proof washers, [Items 25 - [Figure 2](#) and 26 & 27 - [Figure 3](#)].
- 6) Take the bridge plate unit, [Item 4 - [Figure 2](#)], from the kit. Position the bridge plate unit on the housing so that the two 6.2mm mounting holes line up with the two mounting holes in the housing. Fix the bridge plate unit to the housing using the M6 x 20 poz pan head screw, [Item 5 - [Figure 2](#)] and 6mm shake-proof washer, [Item 6 - [Figure 2](#)], in the top right hand hole.

In the bottom left hand fixing hole, ^(See Note 2) fit the M6 x 30 poz pan head screw, nut and washer [Items 7 - [Figure 2](#) and 26 & 27 - [Figure 3](#)],

Note 2:- If converting to a build No 6, No 7 or No 8 then the M6 x 35 poz countersunk screw [Item 34 - [Figure 2](#)] and filler piece extension [Item 33 - [Figure 2](#)] is fitted at this point.

- 7) All the M6 poz head screws should now be tightened to 4Nm [2.95 ft-lbs].
- 8) Set the “Dog Point” – See [Setting the “Dog Point”](#) section [7](#)
- 9) Fit the bottom right hand shoulder screw, [Item 2 - [Figure 2](#)] and colour spacer, [Item 3 - [Figure 2](#)], to the housing.
[Refer to the chart with the kit for the correct spacers for the denomination required].
- 10) Fit Bowl Unit [Item 1 - [Figure 2](#)] and secure in place with the two shoulder screws, [Item 2 - [Figure 2](#)] and colour spacers, [Item 3 - [Figure 2](#)].
[Refer to chart with the kit for correct spacers for the denomination required].
- 11) Fit the label showing the colour spacer layout to the bowl.
- 12) Reconnect level sense wires to bowl.
- 13) Reconnect the plug on the Motor loom to the socket on the loom fitted to the control board.
- 14) Reconnect the opto loom to the control board.
- 15) Fit the new identification label from the kit to the hopper.
- 16) Test the hopper.

7. Setting the “Dog Point”

Please refer to [Figure 2](#).

- 1) Screw the dog point screw, [Item 8] into the M6 tapped hole in the bridge plate, with the dog point end towards the disc, until it is finger tight.
- 2) Fit the 6mm shake-proof washer, [Item 9], onto the dog point. Screw an M6 nut, [Item 10], onto the dog point screw. Secure the dog point screw to the bridge plate by placing the 10mm socket onto the M6 nut and tighten to 4Nm [2.95 ft-lbs].
- 3) Taking the 10mm spanner / wrench and the 3mm allen key, hold the nut with the spanner / wrench and with the allen Key in the dog point, turn the dog point anti-clockwise between half and three quarters of a turn.
- 4) Check that the disc can turn without being obstructed by the pin.

8. Exploded Drawings

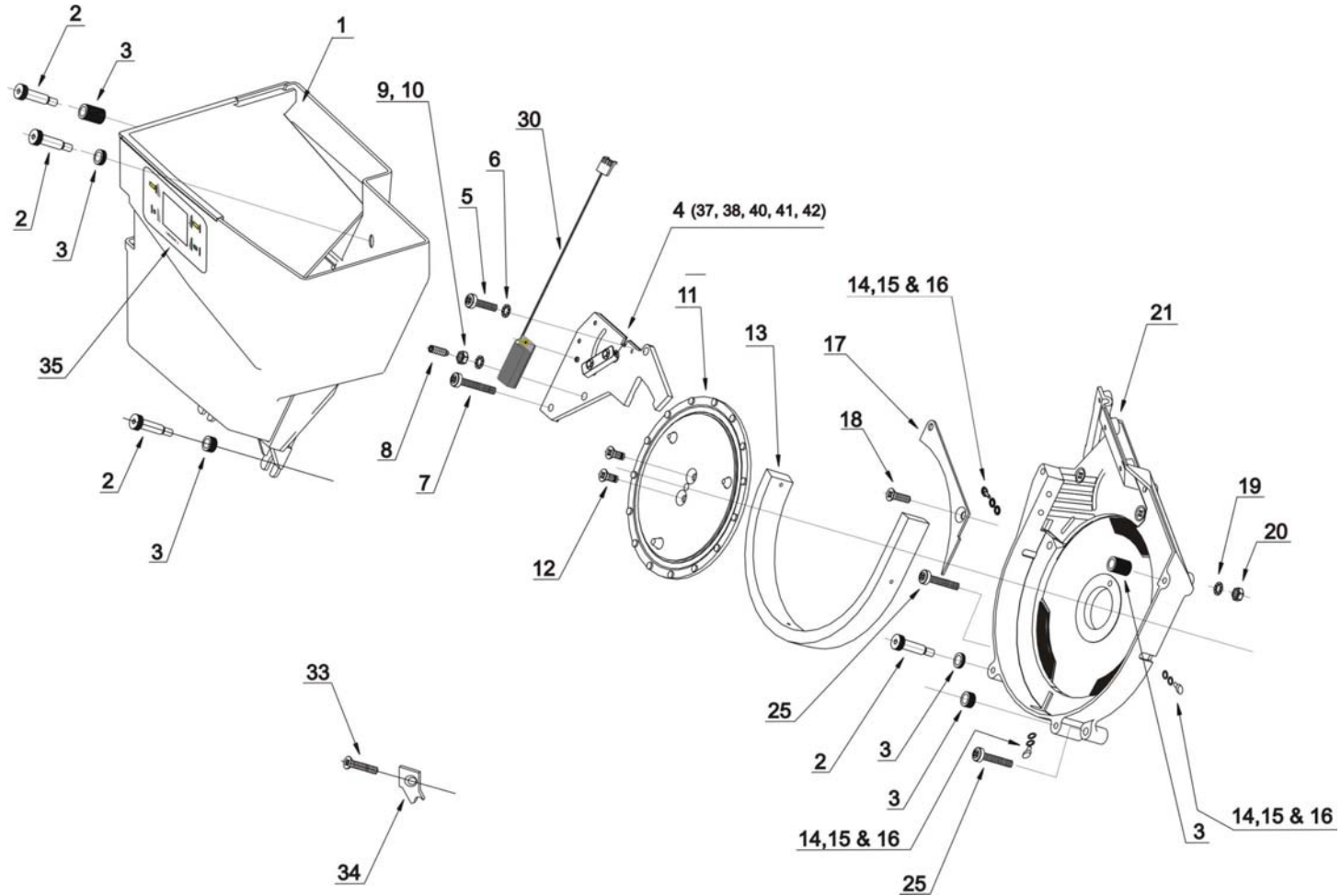


Figure 2: Exploded Drawing – Bowl and disk assembly

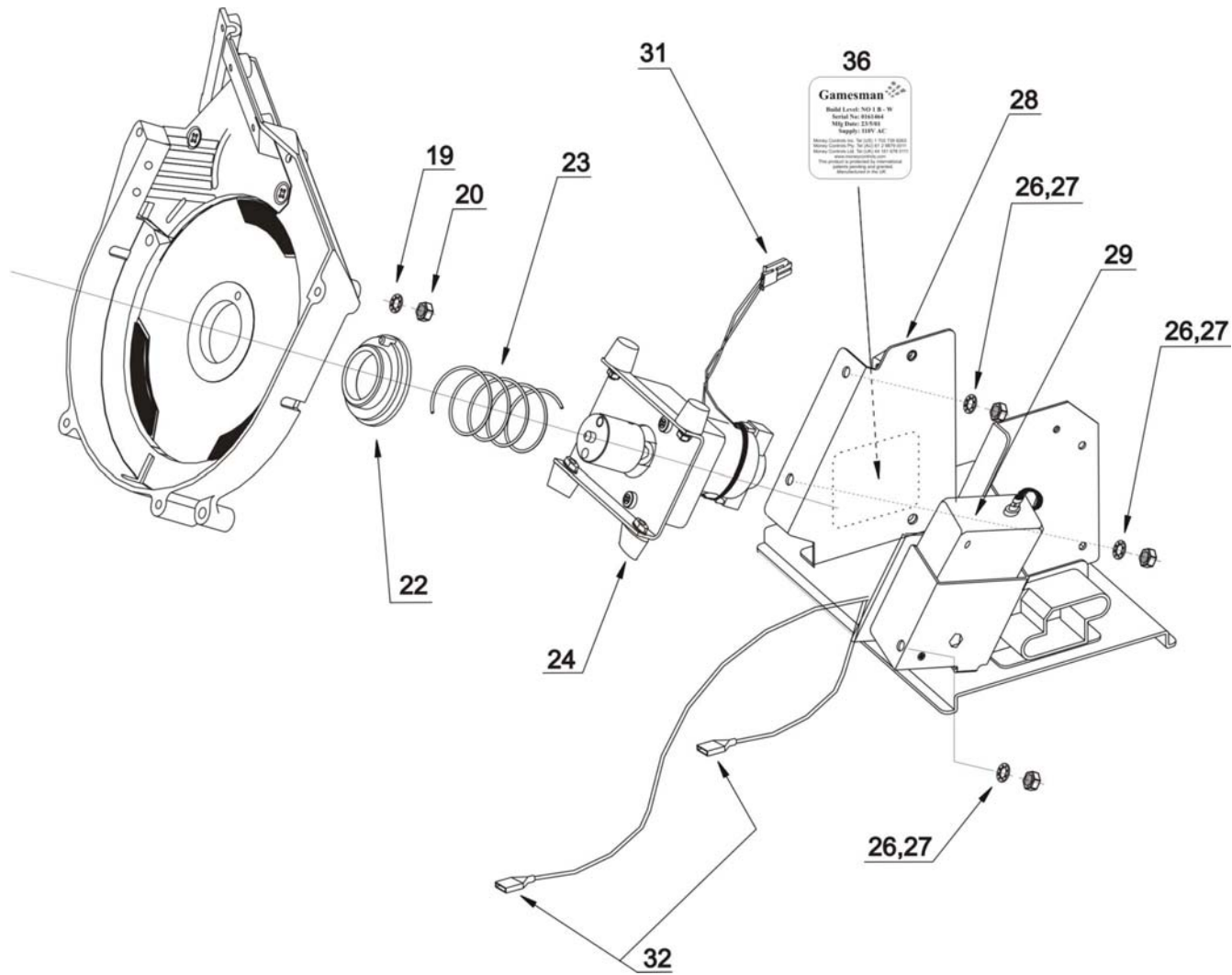


Figure 3: Exploded Drawing – Motor, frame and base assembly

*Table 1: Exploded diagram parts and description.***Part List ref. TSP011** [Figure 2](#) and [Figure 3](#)

Item No	Description	Part No	Comments
1	Bowl Unit		Coin/Token Dependent
2	M6 x 25 Shoulder Screw	HSC/356	
3	Yoke Colour Spacers		Coin/Token Dependent
4	Bridge Plate Assembly		Coin/Token Dependent
5	M6 x 20 Pozi pan screw	HSC/363	
6	6mm Shake-proof Washer	HWA/037	
7	M6 x 30 Pozi pan screw	HSC/369	Coin/Token Dependent
8	M6 x 16 dog point screw	HSC/750	
9	M6 Hex Nut	HNT/026	
10	6mm Shake-proof Washer	HWA/037	
11	Disc Unit		Coin/Token Dependent
12	M6 x 16 Pozi c/sk Anu-Lok Screw	HSC/389	
13	Horseshoe		Coin/Token Dependent
14	M4 Pozi pan screw	HSC/140	Coin/Token Dependent
15	4mm Washer	HWA/012	Coin/Token Dependent
16	4mm Shake-proof Washer	HWA/026	Coin/Token Dependent
17	Wiper Spacer		Coin/Token Dependent
18	M6 x 20 Pozi c/sk screw	HSC/390	
19	6mm Shake-proof Washer	HWA/037	
20	M6 Hex Nut	HNT/026	
21	Housing Unit	SUB/3492	
22	Rotary Bearing	PBL/620	
23	Spring	SPR/030	
24	Drive Assembly	SUB/2342	
25	M6 x 30 Pozi pan screw	HSC/361	
26	M6 Hex Nut	HNT/026	
27	6mm Shake-proof Washer	HWA/037	
28	Frame Assembly	SUB/3479	
29	PSU Unit	PSU/003	
30	Opto Assembly	SUB/2660	
31	Motor Loom		Ref only. This item is Part of Main Harness
32	Level Sense Wires		Ref only. This item is Part of Main Harness
33	M6 x 35 Pozi c/sk screw	HSC/718	Coin/Token Dependent
34	Filler Pieces Extension	MER/169	Coin/Token Dependent
35	Yoke Colour Spacers Label		Coin/Token Dependent
36	Hopper Label	TPL/010	Coin/Token Dependent

Table 2: Build No 1 Conversion parts list.

Conversion Kits for WMS Gamesman Hoppers.

		Build No 1						
		A	B	C	D	E	F	
Item No	TSP011 Ref No	Description	Kit No 1A	Kit No 1B	Kit No 1C	Kit No 1D	Kit No 1E	Kit No 1F
		Configured No	GX205A1A00001	GX205A1B00001	GX205A1C00001	GX205A1D00001	GX205A1E00001	GX205A1F00001
		Production Test Coin	10c Tkn	5c US	0.05 peso Tkn	10 Kr Coin	No Coin	No Coin
1	1	Bowl Unit	SUB/3550	SUB/3550	SUB/3550	SUB/3550	SUB/3550	SUB/3550
2	3	Yoke Spacer 4	PBL/1004	PBL/1004	PBL/1004	PBL/1004	PBL/1004	PBL/1004
3	3	Yoke Spacer 6	PBL/1006	PBL/1006	PBL/1006	PBL/1006	PBL/1006	PBL/1006
4	3	Yoke Spacer	PBL/108	PBL/108	PBL/108	PBL/108	PBL/108	PBL/108
5	3	Yoke Spacer 10	PBL/1010	PBL/1010	PBL/1010	PBL/1010	PBL/1010	PBL/1010
6	3	Yoke Spacer 12	PBL/1012	PBL/1012	PBL/1012	PBL/1012	PBL/1012	PBL/1012
7	4	Bridge Plate Assembly	SUB/3432	SUB/3551	SUB/3433	SUB/3434	SUB/3435	SUB/3436
8	37	Bridge Plate Assy	SUB/3637	SUB/3638	SUB/3639	SUB/3640	SUB/3641	SUB/3642
9	38	Arm Unit 1	SUB/2678	SUB/2678	SUB/2678	SUB/2678	SUB/2678	SUB/2678
10	40	Counter Spring 3	SPR/110	SPR/110	SPR/110	SPR/110	SPR/110	SPR/110
11	41	Arm Roller	PBL/1019	PBL/1019	PBL/1019	PBL/1019	PBL/1019	PBL/1019
12	42	Push on Fastener	HCR/020	HCR/020	HCR/020	HCR/020	HCR/020	HCR/020
13	17	Wiper Spacer [1]	MER/042	MMC/095	MER/042	MER/042	MER/043	MER/042
14	17	Wiper Spacer [2]	N/A	N/A	MER/043	MER/042	MER/043	MER/042
15	17	Wiper Spacer [3]	N/A	N/A	N/A	N/A	MER/043	MER/043
16	11	Disc Unit	SUB/2577	SUB/2577	SUB/2576	SUB/2576	SUB/3442	SUB/3442
17	13	Horseshoe	MER/021	MER/021	MER/021	MER/021	MER/021	MER/021
18	36	Hopper Label	TPL/010	TPL/010	TPL/010	TPL/010	TPL/010	TPL/010
19	35	Yoke Spacer Label	LAB/384	LAB/384	LAB/384	LAB/384	LAB/384	LAB/384
20	7	M6 x 35 Pozi Pan Screw	HSC/369	HSC/369	HSC/369	HSC/369	HSC/369	HSC/369

All components used on the Bridge Plate Assembly

CONFIDENTIAL

Not to be disclosed without prior written permission from Money Controls

Page 14 of 23

Table 3: Build No 2 Conversion parts list.

Conversion Kits for WMS Gamesman Hoppers.

		Build No 2						
		A	B	C	D	E	F	
Item No	TSP011 Ref No	Description	Kit No 2A	Kit No 2B	Kit No 2C	Kit No 2D	Kit No 2E	Kit No 2F
		Configured No	GX205A2A00001	GX205A2B00001	GX205A2C00001	GX205A2D00001	GX205A2E00001	GX205A2F00001
		Production Test Coin	25c Can Coin	25c US	100 Esc Coin	100 Pesetas	50 Esc Coin	No Coin
1	1	Bowl Unit	SUB/3550	SUB/3550	SUB/3550	SUB/3550	SUB/3550	SUB/3550
2	3	Yoke Spacer 4	PBL/1004	PBL/1004	PBL/1004	PBL/1004	PBL/1004	PBL/1004
3	3	Yoke Spacer 6	PBL/1006	PBL/1006	PBL/1006	PBL/1006	PBL/1006	PBL/1006
4	3	Yoke Spacer	PBL/108	PBL/108	PBL/108	PBL/108	PBL/108	PBL/108
5	3	Yoke Spacer 10	PBL/1010	PBL/1010	PBL/1010	PBL/1010	PBL/1010	PBL/1010
6	3	Yoke Spacer 12	PBL/1012	PBL/1012	PBL/1012	PBL/1012	PBL/1012	PBL/1012
7	4	Bridge Plate Unit	SUB/3437	SUB/3552	SUB/3438	SUB/3439	SUB/3440	SUB/3441
8	37	Bridge Plate Assy	SUB/3643	SUB/3644	SUB/3645	SUB/3646	SUB/3647	SUB/3648
9	38	Arm Unit 1	SUB/2678	SUB/2678	SUB/2678	SUB/2678	SUB/2678	SUB/2678
10	40	Counter Spring 3	SPR/110	SPR/110	SPR/110	SPR/110	SPR/110	SPR/110
11	41	Arm Roller	PBL/1019	PBL/1019	PBL/1019	PBL/1019	PBL/1019	PBL/1019
12	42	Push on Fastener	HCR/020	HCR/020	HCR/020	HCR/020	HCR/020	HCR/020
13	17	Wiper Spacer [1]	MER/042	MMC/095	MER/042	MER/042	MER/043	MER/042
14	17	Wiper Spacer [2]	N/A	N/A	MER/043	MER/042	MER/043	MER/042
15	17	Wiper Spacer [3]	N/A	N/A	N/A	N/A	MER/043	MER/043
16	11	Disc Unit	SUB/2581	SUB/2581	SUB/2580	SUB/2580	SUB/3444	SUB/3444
17	13	Horseshoe	MER/021	MER/021	MER/021	MER/021	MER/021	MER/021
18	36	Hopper Label	TPL/010	TPL/010	TPL/010	TPL/010	TPL/010	TPL/010
19	35	Yoke Spacer Label	LAB/384	LAB/384	LAB/384	LAB/384	LAB/384	LAB/384
20	7	M6 x 35 Pozi Pan Screw	HSC/369	HSC/369	HSC/369	HSC/369	HSC/369	HSC/369

All components used on the Bridge Plate Assembly

CONFIDENTIAL

Not to be disclosed without prior written permission from Money Controls

Page 15 of 23

Table 4: Build No 3 Conversion parts list.

Conversion Kits for WMS Gamesman Hoppers.

		Build No 3						
		A	B	C	D	E	F	
Item No	TSP011 Ref No	Description	Kit No 3A	Kit No 3B	Kit No 3C	Kit No 3D	Kit No 3E	Kit No 3F
		Configured No	GX205A3A00001	GX205A3B00001	GX205A3C00001	GX205A3D00001	GX205A3E00001	GX205A3F00001
		Production Test Coin	2c US Tkn	2 FF	20 Kc Coin	\$1 Aus Coin	No Coin	No Coin
1	1	Bowl Unit	SUB/3550	SUB/3550	SUB/3550	SUB/3550	SUB/3550	SUB/3550
2	3	Yoke Spacer 4	PBL/1004	PBL/1004	PBL/1004	PBL/1004	PBL/1004	PBL/1004
3	3	Yoke Spacer 6	PBL/1006	PBL/1006	PBL/1006	PBL/1006	PBL/1006	PBL/1006
4	3	Yoke Spacer	PBL/108	PBL/108	PBL/108	PBL/108	PBL/108	PBL/108
5	3	Yoke Spacer 10	PBL/1010	PBL/1010	PBL/1010	PBL/1010	PBL/1010	PBL/1010
6	3	Yoke Spacer 12	PBL/1012	PBL/1012	PBL/1012	PBL/1012	PBL/1012	PBL/1012
7	4	Bridge Plate Unit	SUB/3446	SUB/3555	SUB/3447	SUB/3448	SUB/3449	SUB/3450
8	37	Bridge Plate Assy	SUB/3649	SUB/3650	SUB/3651	SUB/3652	SUB/3653	SUB/3654
9	38	Arm Unit 1	SUB/2678	SUB/2678	SUB/2678	SUB/2678	SUB/2678	SUB/2678
10	40	Counter Spring 3	SPR/110	SPR/110	SPR/110	SPR/110	SPR/110	SPR/110
11	41	Arm Roller	PBL/1019	PBL/1019	PBL/1019	PBL/1019	PBL/1019	PBL/1019
12	42	Push on Fastener	HCR/020	HCR/020	HCR/020	HCR/020	HCR/020	HCR/020
13	17	Wiper Spacer [1]	MER/042	MMC/095	MER/042	MER/042	MER/043	MER/042
14	17	Wiper Spacer [2]	N/A	N/A	MER/043	MER/042	MER/043	MER/042
15	17	Wiper Spacer [3]	N/A	N/A	N/A	N/A	MER/043	MER/043
16	11	Disc Unit	SUB/3121	SUB/3121	SUB/3119	SUB/3119	SUB/3451	SUB/3451
17	13	Horseshoe	MER/021	MER/021	MER/021	MER/021	MER/021	MER/021
18	36	Hopper Label	TPL/010	TPL/010	TPL/010	TPL/010	TPL/010	TPL/010
19	35	Yoke Spacer Label	LAB/384	LAB/384	LAB/384	LAB/384	LAB/384	LAB/384
20	7	M6 x 35 Pozi Pan Screw	HSC/369	HSC/369	HSC/369	HSC/369	HSC/369	HSC/369

All components used on the Bridge Plate Assembly

CONFIDENTIAL

Not to be disclosed without prior written permission from Money Controls

Page 16 of 23

Table 5: Build No 4 Conversion parts list.

Conversion Kits for WMS Gamesman Hoppers.

		Build No 4						
		A	B	C	D	E	F	
Item No	TSP011 Ref No	Description	Kit No 4A	Kit No 4B	Kit No 4C	Kit No 4D	Kit No 4E	Kit No 4F
		Configured No	GX205A4A00001	GX205A4B00001	GX205A4C00001	GX205A4D00001	GX205A4E00001	GX205A4F00001
		Production Test Coin	No Coin	5 Kr Coin	50c US	5 Bol	No Coin	No Coin
1	1	Bowl Unit	SUB/3550	SUB/3550	SUB/3550	SUB/3550	SUB/3550	SUB/3550
2	3	Yoke Spacer 4	PBL/1004	PBL/1004	PBL/1004	PBL/1004	PBL/1004	PBL/1004
3	3	Yoke Spacer 6	PBL/1006	PBL/1006	PBL/1006	PBL/1006	PBL/1006	PBL/1006
4	3	Yoke Spacer	PBL/108	PBL/108	PBL/108	PBL/108	PBL/108	PBL/108
5	3	Yoke Spacer 10	PBL/1010	PBL/1010	PBL/1010	PBL/1010	PBL/1010	PBL/1010
6	3	Yoke Spacer 12	PBL/1012	PBL/1012	PBL/1012	PBL/1012	PBL/1012	PBL/1012
7	4	Bridge Plate Unit	SUB/3453	SUB/3454	SUB/3562	SUB/3455	SUB/3456	SUB/3457
8	37	Bridge Plate Assy	SUB/3655	SUB/3656	SUB/3657	SUB/3658	SUB/3659	SUB/3660
9	38	Arm Unit 1	SUB/2678	SUB/2678	SUB/2678	SUB/2678	SUB/2678	SUB/2678
10	40	Counter Spring 3	SPR/110	SPR/110	SPR/110	SPR/110	SPR/110	SPR/110
11	41	Arm Roller 2	PBL/1020	PBL/1020	PBL/1020	PBL/1020	PBL/1020	PBL/1020
12	42	Push on Fastener	HCR/020	HCR/020	HCR/020	HCR/020	HCR/020	HCR/020
13	17	Wiper Spacer [1]	MER/042	MMC/095	MER/043	MER/042	MER/043	MER/042
14	17	Wiper Spacer [2]	N/A	N/A	MER/043	MER/042	MER/043	MER/042
15	17	Wiper Spacer [3]	N/A	N/A	N/A	N/A	MER/043	MER/043
16	11	Disc Unit	SUB/3458	SUB/3458	SUB/3563	SUB/3563	SUB/3461	SUB/3461
17	13	Horseshoe	MER/021	MER/021	MER/021	MER/021	MER/021	MER/021
18	36	Hopper Label	TPL/010	TPL/010	TPL/010	TPL/010	TPL/010	TPL/010
19	35	Yoke Spacer Label	LAB/384	LAB/384	LAB/384	LAB/384	LAB/384	LAB/384
20	7	M6 x 35 Pozi Pan Screw	HSC/369	HSC/369	HSC/369	HSC/369	HSC/369	HSC/369

All components used on the Bridge Plate Assembly

CONFIDENTIAL

Not to be disclosed without prior written permission from Money Controls

Page 17 of 23

Table 6: Build No 5 Conversion parts list.

Conversion Kits for WMS Gamesman Hoppers.

			Build No 5					
			A	B	C	D	E	F
Item No	TSP011 Ref No	Description	Kit No 5A	Kit No 5B	Kit No 5C	Kit No 5D	Kit No 5E	Kit No 5F
		Configured No	GX205A5A00001	GX205A5B00001	GX205A5C00001	GX205A5D00001	GX205A5E00001	GX205A5F00001
		Production Test Coin	50c Tkn	50c Tkn	\$2 Tkn	20 Peso	No Coin	No Coin
1	1	Bowl Unit	SUB/3550	SUB/3550	SUB/3550	SUB/3550	SUB/3550	SUB/3550
2	3	Yoke Spacer 12	PBL/1012	PBL/1012	PBL/1012	PBL/1012	PBL/1012	PBL/1012
3	3	Yoke Spacer 1	PBL/1001	PBL/1001	PBL/1001	PBL/1001	PBL/1001	PBL/1001
4	3	Yoke Spacer 11	PBL/1011	PBL/1011	PBL/1011	PBL/1011	PBL/1011	PBL/1011
5	3	Yoke Spacer	PBL/108	PBL/108	PBL/108	PBL/108	PBL/108	PBL/108
6	3	Yoke Spacer 6	PBL/1003	PBL/1003	PBL/1003	PBL/1003	PBL/1003	PBL/1003
7	3	Yoke Spacer 8	PBL/1008	PBL/1008	PBL/1008	PBL/1008	PBL/1008	PBL/1008
8	4	Bridge Plate Unit	SUB/3470	SUB/3475	SUB/3559	SUB/3471	SUB/3472	SUB/3473
9	37	Bridge Plate Assy	SUB/3661	SUB/3662	SUB/3663	SUB/3664	SUB/3665	SUB/3666
10	38	Arm Unit 1	SUB/2678	SUB/2678	SUB/2678	SUB/2678	SUB/2678	SUB/2678
11	40	Counter Spring 3	SPR/110	SPR/110	SPR/110	SPR/110	SPR/110	SPR/110
12	41	Arm Roller 2	PBL/1020	PBL/1020	PBL/1020	PBL/1020	PBL/1020	PBL/1020
13	42	Push on Fastener	HCR/020	HCR/020	HCR/020	HCR/020	HCR/020	HCR/020
14	17	Wiper Spacer [1]	MER/044	MMC/122	MER/045	MER/044	MER/045	MER/044
15	17	Wiper Spacer [2]	N/A	N/A	MER/045	MER/044	MER/045	MER/044
16	17	Wiper Spacer [3]	N/A	N/A	N/A	N/A	MER/045	MER/044
17	11	Disc Unit	SUB/3474	SUB/3474	SUB/3173	SUB/3173	SUB/3476	SUB/3476
18	13	Horseshoe	MER/021	MER/021	MER/021	MER/021	MER/021	MER/021
19	36	Hopper Label	TPL/010	TPL/010	TPL/010	TPL/010	TPL/010	TPL/010
20	35	Yoke Spacer Label	LAB/383	LAB/383	LAB/383	LAB/383	LAB/383	LAB/383
21	7	M6 x 35 Pozi Pan Screw	HSC/369	HSC/369	HSC/369	HSC/369	HSC/369	HSC/369

All components used on the Bridge Plate Assembly

CONFIDENTIAL

Not to be disclosed without prior written permission from Money Controls

Page 18 of 23

Table 7: Build No 6 Conversion parts list.

Conversion Kits for WMS Gamesman Hoppers.

		Build No 6						
		A	B	C	D	E	F	
Item No	TSP011 Ref No	Description	Kit No 6A	Kit No 6B	Kit No 6C	Kit No 6D	Kit No 6E	Kit No 6F
		Configured No	GX205A6A00001	GX205A6B00001	GX205A6C00001	GX205A6D00001	GX205A6E00001	GX205A6F00001
		Production Test Coin	No Coin	No Coin	T522	\$1 Tkn	No Coin	No Coin
1	1	Bowl Unit	SUB/3564	SUB/3564	SUB/3564	SUB/3564	SUB/3564	SUB/3564
2	3	Yoke Spacer 12	PBL/1012	PBL/1012	PBL/1012	PBL/1012	PBL/1012	PBL/1012
3	3	Yoke Spacer	PBL/108	PBL/108	PBL/108	PBL/108	PBL/108	PBL/108
4	3	Yoke Spacer 8	PBL/1008	PBL/1008	PBL/1008	PBL/1008	PBL/1008	PBL/1008
5	4	Bridge Plate Unit	SUB/3486	SUB/3487	SUB/3557	SUB/3488	SUB/3489	SUB/3490
6	37	Bridge Plate Assy	SUB/3667	SUB/3668	SUB/3669	SUB/3670	SUB/3671	SUB/3672
7	38	Arm Unit 2	SUB/2679	SUB/2679	SUB/2679	SUB/2679	SUB/2679	SUB/2679
8	40	Counter Spring 3	SPR/110	SPR/110	SPR/110	SPR/110	SPR/110	SPR/110
9	41	Arm Roller 2	PBL/1020	PBL/1020	PBL/1020	PBL/1020	PBL/1020	PBL/1020
10	42	Push on Fastener	HCR/020	HCR/020	HCR/020	HCR/020	HCR/020	HCR/020
11	17	Wiper Spacer [1]	MER/044	MMC/122	MER/044	MER/044	MER/045	MER/044
12	17	Wiper Spacer [2]	N/A	N/A	MER/045	MER/044	MER/045	MER/044
13	17	Wiper Spacer [3]	N/A	N/A	N/A	N/A	MER/045	MER/044
14	11	Disc Unit	SUB/3491	SUB/3491	SUB/3191	SUB/3191	SUB/3497	SUB/3497
15	13	Horseshoe	MER/013	MER/013	MER/013	MER/013	MER/013	MER/013
16	36	Hopper Label	TPL/010	TPL/010	TPL/010	TPL/010	TPL/010	TPL/010
17	35	Yoke Spacer Label	LAB/382	LAB/382	LAB/382	LAB/382	LAB/382	LAB/382
18	33	M3x35 Pozi c/sk Screw	HSC/718	HSC/718	HSC/718	HSC/718	HSC/718	HSC/718
19	34	Filler Pieces Extension	MER/169	MER/169	MER/169	MER/169	MER/169	MER/169

All components used on the Bridge Plate Assembly

CONFIDENTIAL

Not to be disclosed without prior written permission from Money Controls

Page 19 of 23

Table 8: Build No 7 Conversion parts list.

Conversion Kits for WMS Gamesman Hoppers.

		Build No 7						
		A	B	C	D	E	F	
Item No	TSP011 Ref No	Description	Kit No 7A	Kit No 7B	Kit No 7C	Kit No 7D	Kit No 7E	Kit No 7F
		Configured No	GX205A7A00001	GX205A7B00001	GX205A7C00001	GX205A7D00001	GX205A7E00001	GX205A7F00001
		Production Test Coin	No Coin	No Coin	IDX Tkn	No Coin	\$2 Aus Coin	No Coin
1	1	Bowl Unit	SUB/3564	SUB/3564	SUB/3564	SUB/3564	SUB/3564	SUB/3564
2	3	Yoke Spacer 12	PBL/1012	PBL/1012	PBL/1012	PBL/1012	PBL/1012	PBL/1012
3	3	Yoke Spacer	PBL/108	PBL/108	PBL/108	PBL/108	PBL/108	PBL/108
4	3	Yoke Spacer 8	PBL/1008	PBL/1008	PBL/1008	PBL/1008	PBL/1008	PBL/1008
5	4	Bridge Plate Unit	SUB/3463	SUB/3464	SUB/3465	SUB/3466	SUB/3467	SUB/3468
6	37	Bridge Plate Assy	SUB/3673	SUB/3674	SUB/3675	SUB/3676	SUB/3677	SUB/3678
7	38	Arm Unit 2	SUB/2679	SUB/2679	SUB/2679	SUB/2679	SUB/2679	SUB/2679
8	40	Counter Spring 3	SPR/110	SPR/110	SPR/110	SPR/110	SPR/110	SPR/110
9	41	Arm Roller 2	PBL/1020	PBL/1020	PBL/1020	PBL/1020	PBL/1020	PBL/1020
10	42	Push on Fastener	HCR/020	HCR/020	HCR/020	HCR/020	HCR/020	HCR/020
11	17	Wiper Spacer [1]	MER/044	MMC/122	MER/044	MER/044	MER/045	MER/044
12	17	Wiper Spacer [2]	N/A	N/A	MER/045	MER/044	MER/045	MER/044
13	17	Wiper Spacer [3]	N/A	N/A	N/A	N/A	MER/045	MER/044
14	11	Disc Unit	SUB/3478	SUB/3478	SUB/3480	SUB/3480	SUB/3482	SUB/3482
15	13	Horseshoe	MER/013	MER/013	MER/013	MER/013	MER/013	MER/013
16	36	Hopper Label	TPL/010	TPL/010	TPL/010	TPL/010	TPL/010	TPL/010
17	35	Yoke Spacer Label	LAB/382	LAB/382	LAB/382	LAB/382	LAB/382	LAB/382
18	33	M3x35 Pozi c/sk Screw	HSC/718	HSC/718	HSC/718	HSC/718	HSC/718	HSC/718
19	34	Filler Pieces Extension	MER/169	MER/169	MER/169	MER/169	MER/169	MER/169

All components used on the Bridge Plate Assembly

CONFIDENTIAL

Not to be disclosed without prior written permission from Money Controls

Page 20 of 23

Table 9: Build No 8 Conversion parts list.

Conversion Kits for WMS Gamesman Hoppers.

			Build No 8					
			A	B	C	D	E	F
Item No	TSP011 Ref No	Description	Kit No 8A	Kit No 8B	Kit No 8C	Kit No 8D	Kit No 8E	Kit No 8F
		Configured No	GX205A8A00001	GX205A8B00001	GX205A8C00001	GX205A8D00001	GX205A8E00001	GX205A8F00001
		Production Test Coin	No Coin	No Coin	No Coin	T622	No Coin	No Coin
1	1	Bowl Unit				SUB/3484		
2	3	Yoke Spacer 12				PBL/1012		
3	3	Yoke Spacer				PBL/108		
4	3	Yoke Spacer 8				PBL/1008		
5	4	Bridge Plate Unit				SUB/3485		
6	37	Bridge Plate Assy				SUB/3682		
7	38	Arm Unit 2				SUB/2679		
8	40	Counter Spring 3				SPR/110		
9	41	Arm Roller 2				PBL/1020		
10	42	Push on Fastener				HCR/020		
11	17	Wiper Spacer [1]				MER/141		
12	17	Wiper Spacer [2]				N/A		
13	17	Wiper Spacer [3]				N/A		
14	11	Disc Unit				SUB/3120		
15	13	Horseshoe				N/A		
16	36	Hopper Label				TPL/010		
17	35	Yoke Spacer Label				LAB/393		
18	33	M3x35 Pozi c/sk Screw				HSC/718		
19	34	Filler Pieces Extension				MER/169		

All components used on the Bridge Plate Assembly

Table 10: Build No 9 Conversion parts list.

Conversion Kits for WMS Gamesman Hoppers.

			Build No 9					
			A	B	C	D	E	F
Item No	TSP011 Ref No	Description	Kit No 9A		Kit No 9C			
		Configured No	GX205A9A00001		GX205A9C00001			
		Production Test Coin	10c US		25 Peseta			
1	1	Bowl Unit	SUB/3460		SUB/3550			
2	3	Yoke Spacer 4	PBL/1004		PBL/1004			
3	3	Yoke Spacer 6	PBL/1006		PBL/1006			
4	3	Yoke Spacer	PBL/108		PBL/108			
5	3	Yoke Spacer 10	PBL/1010		PBL/1010			
6	3	Yoke Spacer 12	PBL/1012		PBL/1012			
7	4	Bridge Plate Unit	SUB/3492		SUB/3933			
8	37	Bridge Plate Assy	SUB/3685		SUB/3687			
9	38	Arm Unit 1	SUB/2678		SUB/2678			
10	40	Counter Spring 3	SPR/110		SPR/110			
11	41	Arm Roller	PBL/1019		PBL/1019			
12	42	Push on Fastener	HCR/020		HCR/020			
13	17	Wiper Spacer [1]	MER/174		MER/042			
14	17	Wiper Spacer [2]	N/A		MER/043			
15	17	Wiper Spacer [3]	N/A		N/A			
16	11	Disc Unit	SUB/3459		SUB/3936			
17	13	Horseshoe	MER/175		MER/021			
18	36	Hopper Label	TPL/010		TPL/010			
19	35	Yoke Spacer Label	LAB/394		LAB/384			
20	7	M6 x 35 Pozi Pan Screw	HSC/369		HSC/369			

All components used on the Bridge Plate Assembly

CONFIDENTIAL

Not to be disclosed without prior written permission from Money Controls

Page 22 of 23

This manual is intended only to assist the reader in the use of this product and therefore Money Controls shall not be liable for any loss or damage whatsoever arising from the use of any information or particulars in, or any incorrect use of the product. Money Controls reserve the right to change product specifications on any item without prior notice